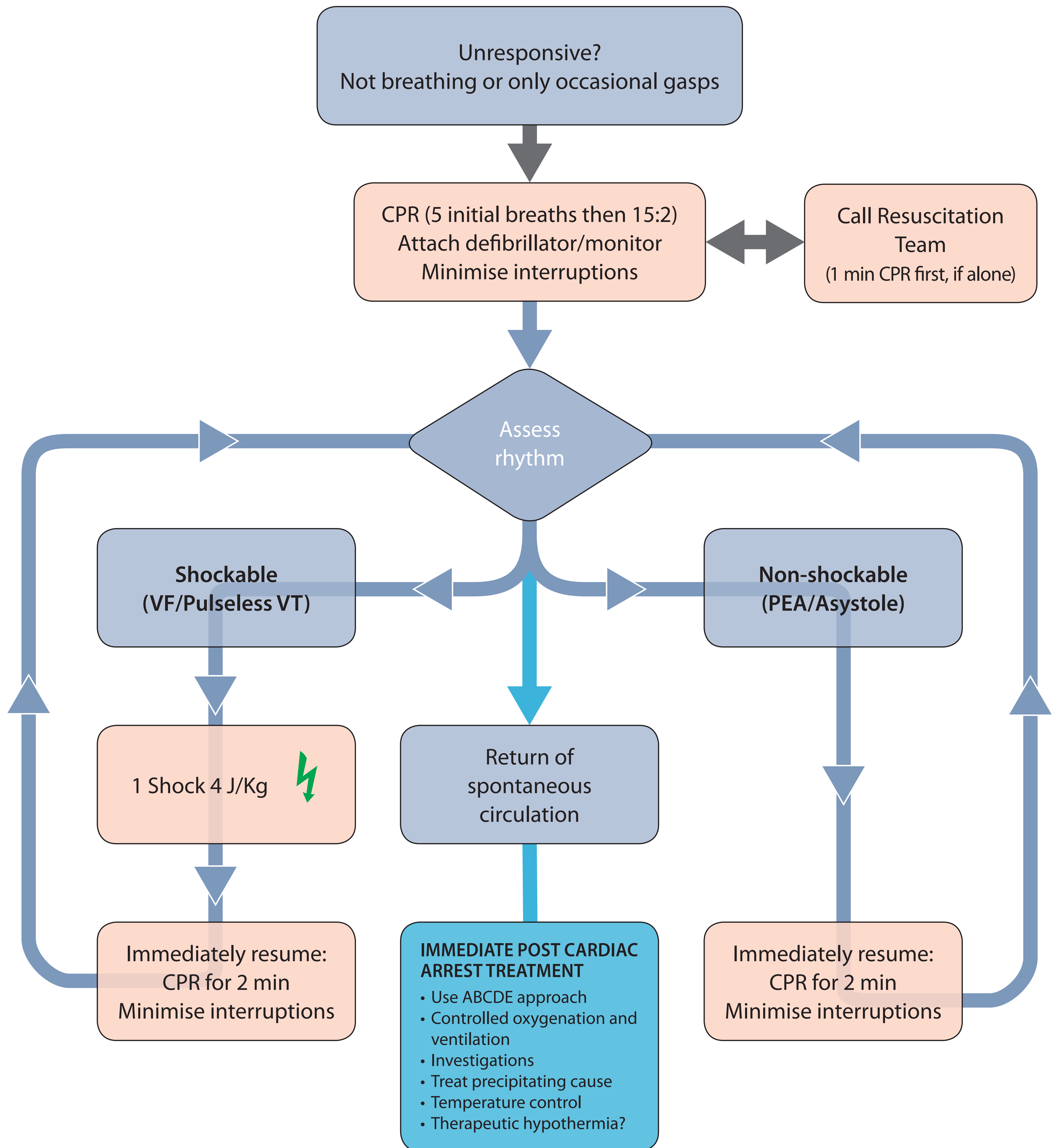




Paediatric Life Support

Advanced Life Support



DURING CPR

- Ensure high-quality CPR: rate, depth, recoil
- Plan actions before interrupting CPR
- Give oxygen
- Vascular access (intravenous, intraosseous)
- Give adrenaline every 3-5 min
- Consider advanced airway and capnography
- Continuous chest compressions when advanced airway in place
- Correct reversible causes

REVERSIBLE CAUSES

- Hypoxia
- Hypovolaemia
- Hypo-/hyperkalaemia/metabolic
- Hypothermia
- Tension pneumothorax
- Toxins
- Tamponade - cardiac
- Thromboembolism